

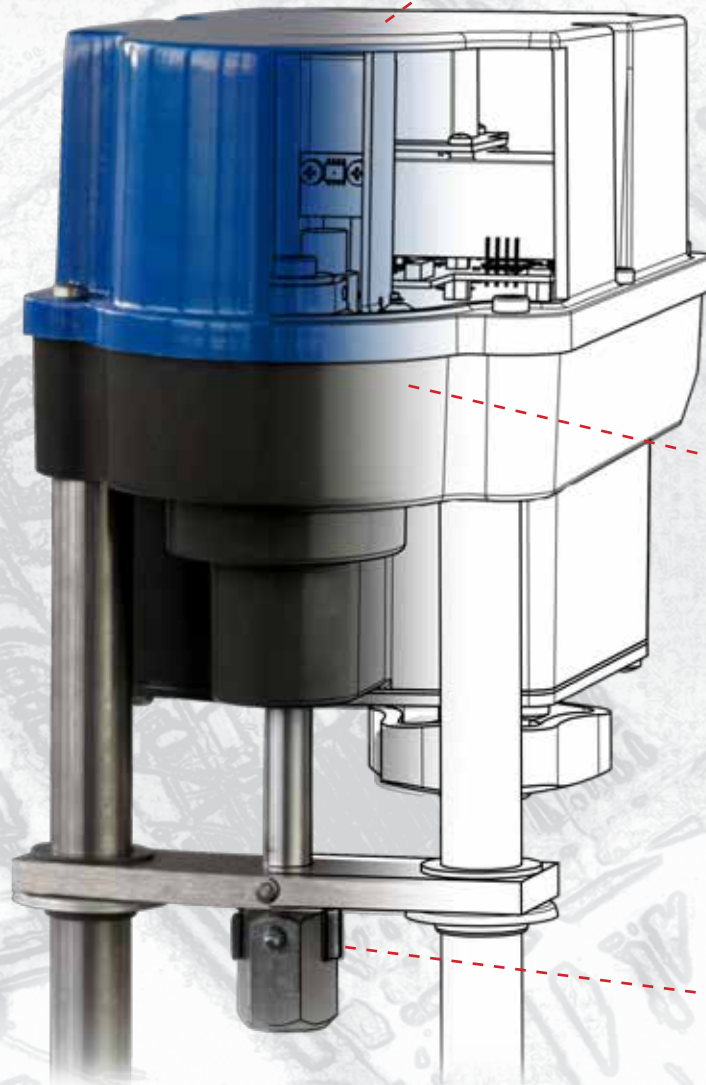
# PSF-M

The linear actuator with brushless motor

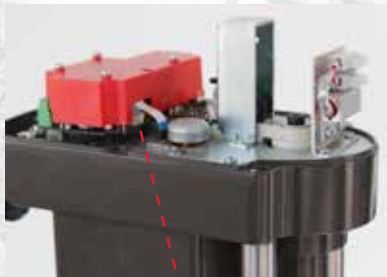


Contactless, non-wearing travel detection with Hall sensor for exact positioning

Robust industrial design with polycarbonate cover, enclosure rating IP65 (IP67 optional)



Compact design with low installation height, durable aluminium gearbox



Brushless DC motor (BLDC). Controller with integrated positioner function. Status display and automatic calibration

Easy valve mounting



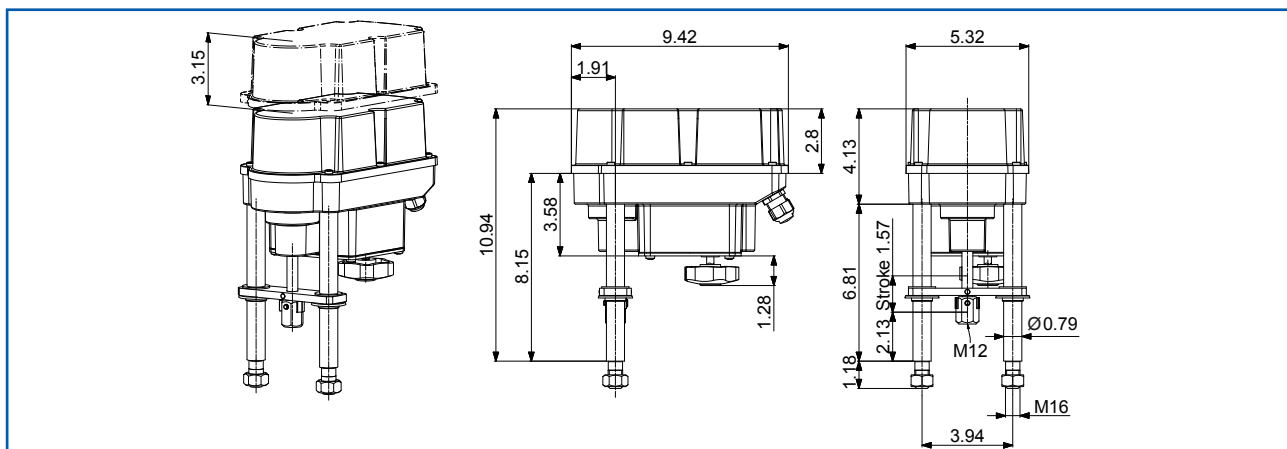
Manual operation with push buttons or handwheel. Parameter setting via DIP switches



## Technical Data

		PSF-M401	PSF-M402
Thrust	lbf	224	455
Stroke	in.	max. 1.57	
Pillar distance	in.	3.94	
Manual override		electrically via 2 push buttons or handwheel	
Weight approx.	lb	11.3	
Stroke speed	s./in.	42.3 / 28.2 / 21.2 adjustable	50.8 / 33.9 / 25.4 (adjustable)
Power supply		24 VAC/DC, optionally wide range power supply (100 - 240 VAC)	
Motor protection		Electronic motor current monitoring with safety cut-off	
Duty cycle as per IEC 60034-1,8		S2 30 min / S4 1200c/h - 50% ED	
Permitted ambient temperature		☐4°F to 140°F	
Internal fault monitoring		Thrust, control signal, temperature, power supply	
Binary control		24 - 230 VAC for ON/OFF service	
Control signal and feedback		0-20 mA, 4-20 mA, 0-10 V, 2-10 V selectable	
Mounting position		Any position, except cover pointing downwards	
Conduit entries		2 pcs. M 20 x 1.5 / 1 pc. M 16 x 1.5	
Enclosure rating acc. to EN 60529		IP65 (IP67 optional)	
Cover material		Polycarbonate	
Gear case material		High quality aluminium die casting, powder-coated (60 µm thickness)	
Pillar material		Steel 1.4104	

## Dimensional Data



### PS Automation GmbH

Philipp-Krämer-Ring 13 • D-67098 Bad Dürkheim  
+49 (0) 6322-94980-0 • info@ps-automation.com  
www.ps-automation.com

Engineered and Made in Germany

