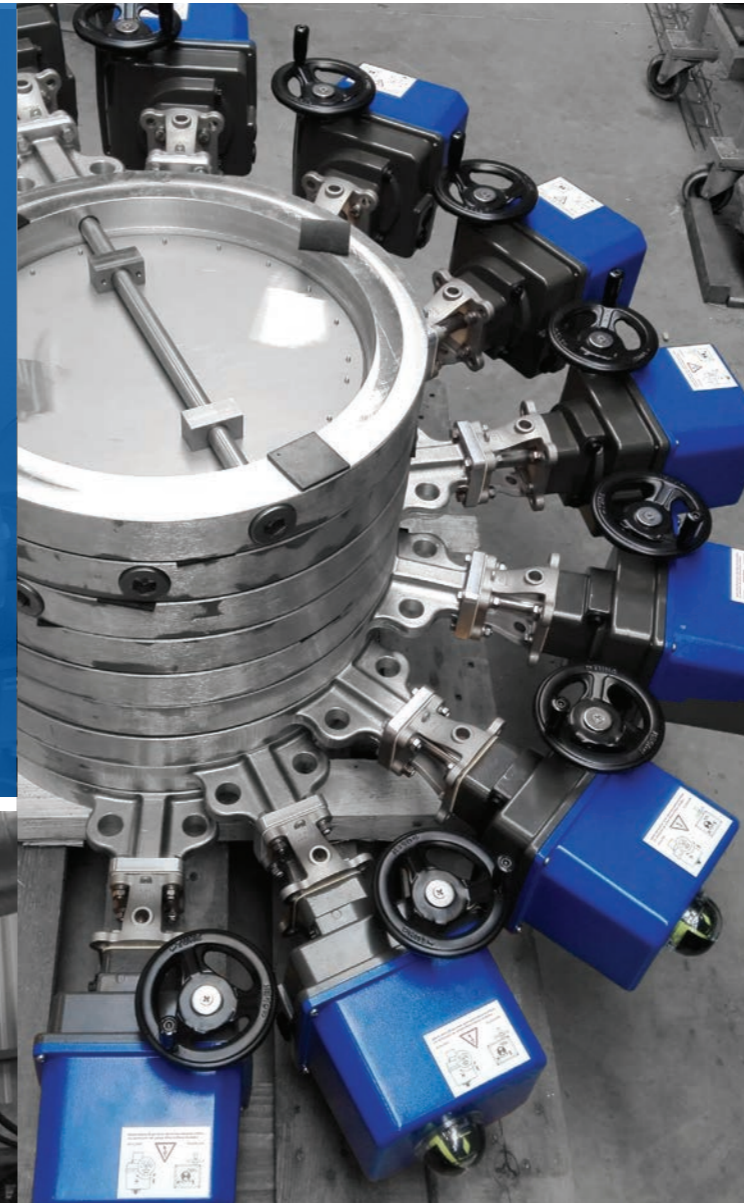


Designed,
engineered and
built in Germany
since 1989

Specialist for Valve Actuation

At PS Automation, we produce a broad range of actuators in order to automate valves. For more than 35 years our adapted to your needs products care for actuation. What makes them so unique? They are robust, reliable and innovative. Compact construction with upgradeable features allows a wide range of applications. Thanks to continuous development, we can always offer you the most innovative solutions. Let us control the material flows in your system and see yourself!



Have we piqued your interest?



PS Automation GmbH
Philipp-Krämer-Ring 13
67098 Bad Dürkheim

www.ps-automation.com
info@ps-automation.com
+49 6322 94980-0

With Quality Comes Reliability

- ✓ Every single actuator is tested after assembling
- ✓ Gearbox is protected by metal housing
- ✓ Enclosure at least IP65

Innovation Ensures Progress

- ✓ Intelligent actuators suitable for fieldbus application
- ✓ Fail-safe function based on supercapacitors

Our Flexibility = Your Advantage

- ✓ Actuators suitable for modulating application
- ✓ For all common power supplies
- ✓ Compact design with retrofitable features

QUARTER-TURN ACTUATORS

LINEAR ACTUATORS

PS-AMS PSQ



Torque: 130 - 3.000 Nm
 Operation Time: 9 - 280 s for 90°
 Enclosure: IP67 or IP68 according to EN 60529
 Valid ambient temperature: -20 to +60°C

Intelligent actuator with options for fail-safe and fieldbus application

Thrust: 1 - 25 kN
 Velocity: 0.2 - 4.5 mm/s
 Enclosure: IP65 or IP67 according to EN 60529
 Valid ambient temperature: -20 to +60°C

Linear actuator for demanding control applications

PS-AMS PSL



PSQ



Torque: 130 - 3.000 Nm
 Operation Time: 8 - 120 s for 90°
 Enclosure: IP67 or IP68 according to EN 60529
 Valid ambient temperature: -20 to +80°C (S2); -20 to +60°C (S4)

Tough all-rounder with mechanical torque switches

Thrust: 1 - 30 kN
 Velocity: 0.25 - 1 mm/s
 Enclosure: IP65 / IP67 / IP68 according to EN 60529
 Valid ambient temperature: -20 to +80° C (S2); -20 to +60° C (S4)

Durable linear valve actuator

PSL



PSF-Q & PSF-Q-M



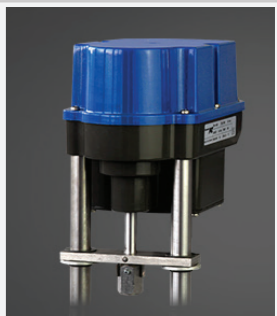
Torque: 50 / 80 Nm
 Operation Time: 16 - 30 s for 90°
 Enclosure: IP65 according to DIN EN 60529
 Valid ambient temperature: -10 to +60° C

Intelligent quarter-turn actuator with fail safe function

Thrust: 1 - 2 kN
 Velocity: 0.3 - 2 mm/s
 Enclosure: IP65 or IP67 according to EN 60529
 Valid ambient temperature: -10 to +60° C

Compact actuator with mechanical fail-safe function

PSF



PSF-Q-EX & PSF-Q-M-EX



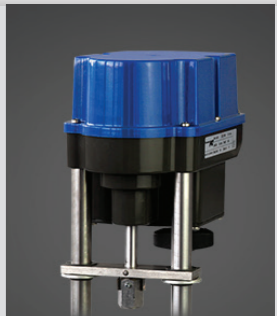
Torque: 50 / 80 Nm
 Operation Time: 16 - 30 s for 90°
 Enclosure: IP67 according to DIN EN 60529
 Valid ambient temperature: -10 to +60° C

EX-proof with mechanical fail safe function or manual override

Thrust: 1 - 2 kN
 Velocity: 0.5 - 1.2 mm/s
 Enclosure: IP65 or IP67 according to EN 60529
 Valid ambient temperature: -10 to +60° C

Parameterizable actuator with manual override

PSF-M



PSQ-E & PSR-E



Torque: 100 - 150 Nm (PSQ-E), 25 - 50 Nm (PSR-E)
 Operation Time: 23 s (PSQ-E), 6 - 80 s (PSR-E) for 90°
 Enclosure: IP67 / IP68 (PSQ-E), IP65 / IP67 (PSR-E) acc. to EN 60529
 Valid ambient temperature: -25 to +70°C (S2); -20 to +60°C (S4)

Durable industrial actuators for On/Off application

Thrust: 1 - 10 kN
 Velocity: 0.3 - 2.0 mm/s
 Enclosure: IP65 or IP67 according to EN 60529
 Valid ambient temperature: -10 to +60° C

EX-proof with mechanical fail safe function or manual override

PSF-EX / PSF-M-EX

