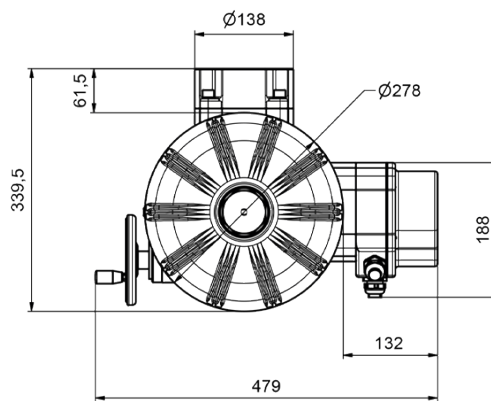
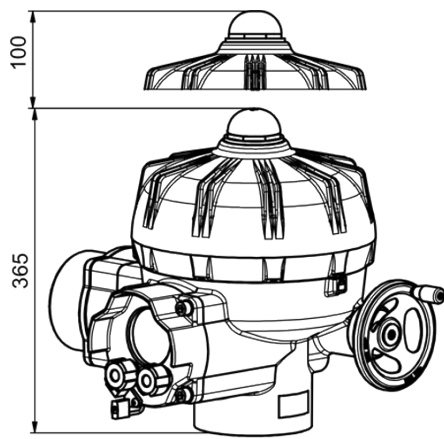


# Intelligent Quarter-Turn Actuator



Approx. weight: 28 kg without accessories

**PSQEX200  
AMS22  
Positioner  
integrated**

**60 - 200 Nm  
Switching torque)<sup>1</sup>**

**6 s - 20 s  
Op. Time/90°**

**Flange  
F07 + F10**

Modulating Actuator  
**Class C**  
acc. EN ISO 22153

**Enclosure IP67**  
EN 60529

Operating Time/90°	6 - 20 s (adjustable)				PSQEX200 AMS22
Power Supply [V]	100-240 VAC 1~	24 VDC	24 VAC	200-440 VAC 3~ ) <sup>2</sup>	
Normal Current ) <sup>4</sup> [A]	0.6 - 1.1	3.5	4.6	0.42 ) <sup>3</sup>	
Maximum Current) <sup>4</sup> [A]	0.8	5	7	0.6 ) <sup>3</sup>	
Power Consumption ) <sup>5</sup> [W]	90	80	80	85 ) <sup>3</sup>	

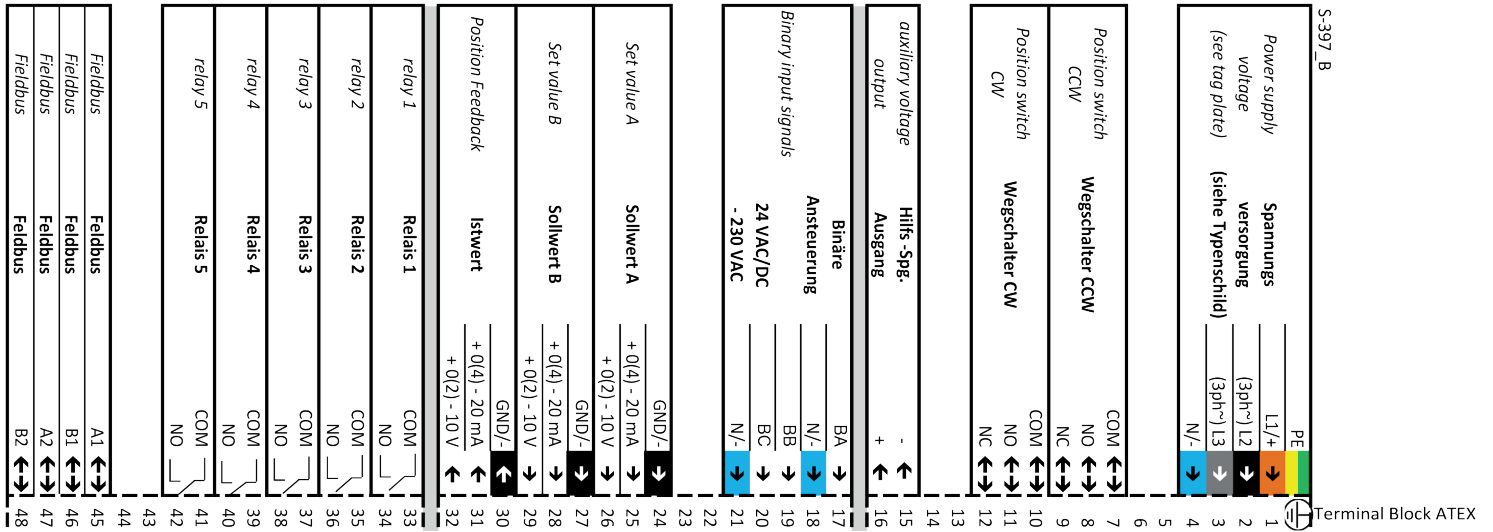
Standard	Description	Standard Equipment
Ambient Temperature [°C]	-20 to +60 °C	
Motor Protection	electronic motor current monitoring with safety cut-off	
Oversvoltage category	II, on request III	
Break away torque	adjustable up to +50% nominal torque	
Duty Cycle IEC 60034-1,8	S2 30 min / S4 50% ED @25°C	
Set value and Feedback	current 0 (4)... 20 mA, voltage 0 (2)... 10 V adjustable, split-range operation possible	
Binary control	24 V - 230 V for ON/OFF control (min. duration of pulse 1s)	
Valve Positioner Function	deadband adjustable from 5 ..100‰, shut-off minimum at torque switching	
Automatic Start-up	Recognizing the end position(s) and autoscaling set and feedback values	
Internal Fault Monitoring	Torque, set value, temperature, power supply, deviation of end positions, adjustable actions and signalisation	
Diagnostics Function	Data storage of number of motor starts, motor operating hours and rolling storage of set/actual value, torque, actuator temperature and status (acc. to NE107)	
Communication Interface	for parametrisation and diagnosis PSCS.WIFI oder PSCS.2 with USB data cable	
Cable Glands	4 plug screws M25x1.5	
Heating Resistor HR	Heating resistor to prevent condensation, already internally wired	

)<sup>1</sup> = Permissible average torque over the entire travel is 50% of the max. torque  
 )<sup>2</sup> = at nominal torque

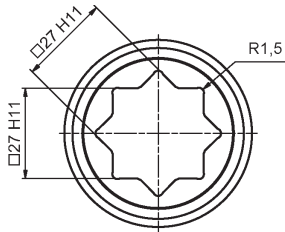
)<sup>3</sup> = at 400 V 3 phases and 50 Hz  
 )<sup>4</sup> = Data can change depending on accessories  
 )<sup>5</sup> = at switching torque, data can change depending on accessories

Certificates		PSQEX200 AMS22
Device category	II 2G   II 2D	
EU Type Examination Certificate	TÜV-A 25ATEX0103 X	
ATEX directive gases	Ex db eb IIC T6/T4 Gb	
ATEX directive dusts	Ex tb IIICT80°C/T130°C Db	
IECEx CoC	IECEx BKI 25.0010X	
IECEx directive gases	Ex db eb IIC T6/T4 Gb	
IECEx directive dusts	Ex tb IIICT80°C/T130°C Db	

Electrical Connection Plan

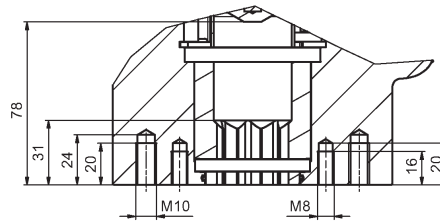


Double Square Drive Bush

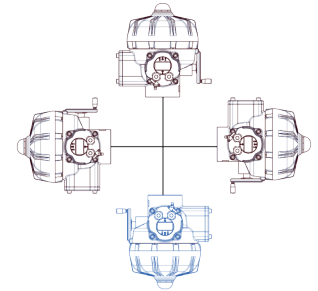


ISO Flange Dimensions

F07 / F10



Mounting Position



Please check the drive bushes datasheet for the available sizes!  
Other customized drive bushes on request!

Accessories/Options

Add'l Position Switches	2WE	Potential-free additional position switches with silver contacts (0.1 A - 10 A switching current)
Add'l Position Switches Gold	2WE Gold	Potential-free additional position switches with gold contacts (0.1 mA - 100 mA switching current)
Integrated process	PSIC	Enables the autonomous control of a process so that an external controller is not required
Fail-Safe*	PSCP	Emergency power supply based on supercapacitors, safety position OPEN, CLOSED or free defined position
Fieldbus Interface*		Digital transmission of nominal and actual value per mill or percent, report of monitoring and diagnostic data using Profibus DP (PSPDP), CANOpen (PSCA), PROFINET, MODBUS-RTU interfaces, additional interfaces available on request
Local Control*	PSC.3	Illuminated display to show the actuator status and lockable selector to switch between modes: automatic, manual process ON/OFF, STOP and parameter menu. Control buttons for manual movement, menu operation and adjustment of parameters, display of diagnostic information. Also available for mounting separately from the actuator (Modbus Connection, Master/Slave)
Rotational speed controller, set value B		External regulation of the rotational speed via set value B.
Relay module		5 potential-free relays with changeover contacts for reporting parameterisable events. Suitable for switching currents 0.1 A to 1 A at a voltage of 24 VAC/DC
Increased enclosure**	IP	Increased enclosure IP68 available
Cable Glands		Available with up to 4x cable glands M25x1.5

\*not retrofittable

\*\* IP68, no ingress of dust and suitable for continuous immersion in water up to 6 m and 96 h

For more information and accessories, please visit our website [www.ps-automation.com](http://www.ps-automation.com)!  
Subject to changes!