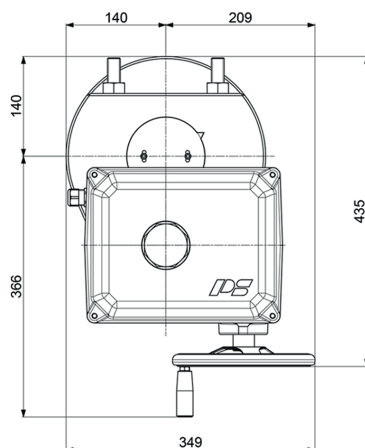
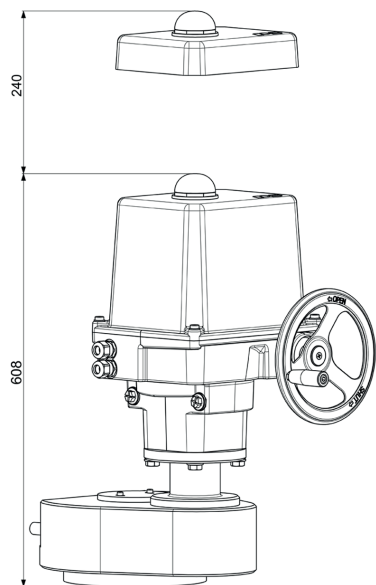


Electric Quarter Turn Actuator

PSQ2003



Approx. weight: 54 kg without accessories

2000 Nm
Switching torque)¹

50 s
Operating Time/90°

Flange
F16
Modulating Actuator
Class C
acc. DIN EN ISO 22153

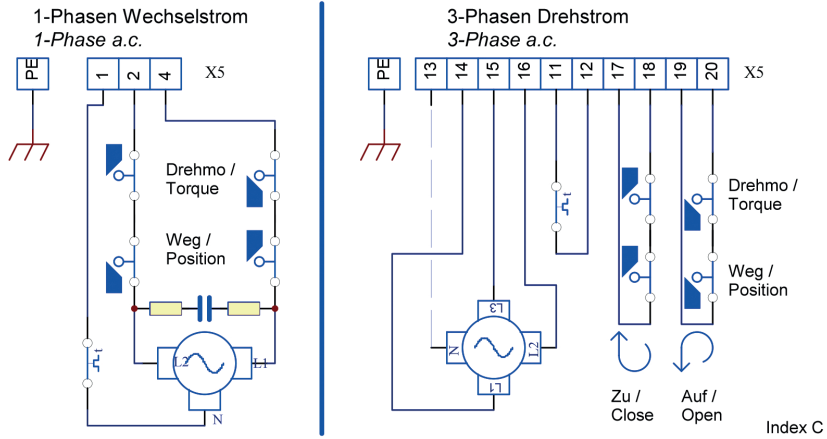
Enclosure IP67
acc. EN 60529

Operating Time/90°		50 s [50 - 60 Hz]	PSQ2003 2000 Nm
Power Supply	[V]	230 VAC 1~	
Frequency	[Hz]	50 / 60	
Nominal Current	[A]	1.2	
Maximum Current	[A]	6.4	
Power Consumption) ²	[W]	300	
Duty Cycle	IEC 60034-1,8	S2 15 min / S4 50% ED @ 25°C - 1200 c/h	
Ambient Temperature	[°C]	-20°C to +80°C (S2)/-20°C to +60°C (S4)	
Overvoltage Category		II	
Motor Protection		Thermo switch	

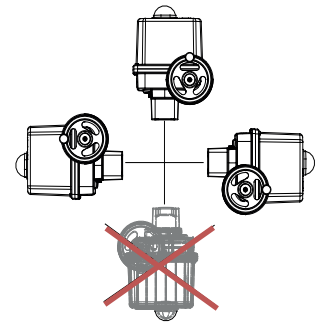
)¹ = Permissible average thrust over the entire travel is 50% of the max. thrust

)² = at switching torque and 50 Hz

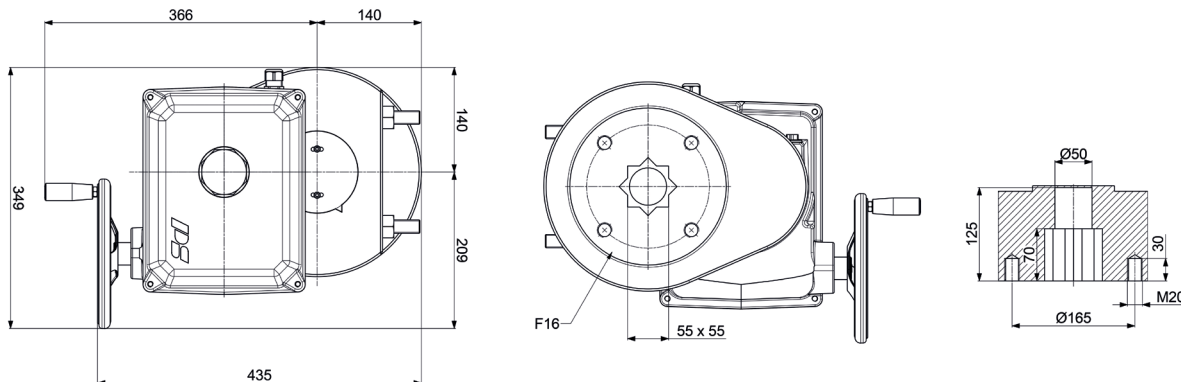
Electrical Connection Plan



Mounting Position



Mechanical Connection



Accessories / Options	Power Supply	230 VAC 1~	
	Add'l Position Switches	2WE	•
	Add'l Position Switches Gold	2WE Gold	•
	Additional torque switch	2DE	•
	Add'l Torque Switches Gold	2DE Gold	•
	Positioner	PSAP	•) ³
	Position Transmitter	PSPT	•
	Heating Resistor	HR	•
	Potentiometer	PD	•
Corrosion Protection	K2	Corrosion Protection K2 incl. Heating Resistor	

• available, for further information see respective datasheet
³ = PSAP with external relay required

For more information and accessories, please visit our website www.ps-automation.com!

Subject to changes!